



GWS Engineers & Fabricators Pvt. Ltd.

Aluminium & Steel CNC Fabricators

MANUFACTURING WORLD-CLASS SHEET METAL

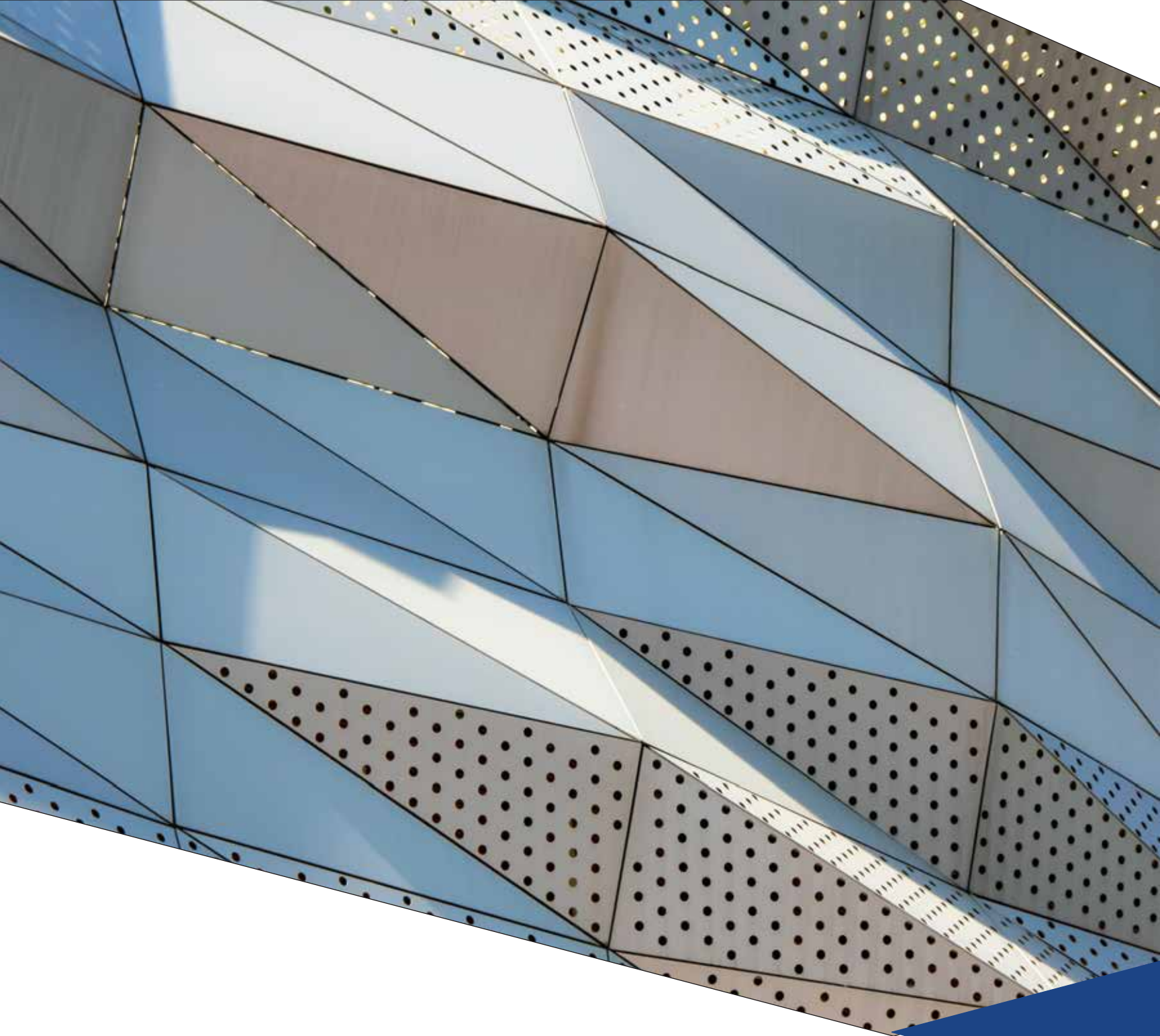
For 15 years, GWS Engineers & Fabricators has been meeting the sheet metal needs of industrial businesses. Through innovation, expertise, and sheer brilliance, we've carved a niche for ourselves, in the architectural space, as the sheet metal manufacturer that's fashioning the future of architecture.

WELCOME TO FUTURISM IN ARCHITECTURE

SHEET METAL SOLUTIONS THAT LOOK AHEAD

- To imagine the extraordinary
- To achieve the incredible
- To design the next
- To create the future





A LEADING INDIAN SHEET METAL FABRICATOR

Established in 2004 GWS Engineers & Fabricators is an ISO 9001-2000-certified leader in India's sheet metal fabrication sector. We boast a 60,000 sq.ft.modern manufacturing plant complete with CNC manufacturing plant complete with CNC manufacturing equipment from Amada, Japan.

Located in Navi Mumbai, the plant boasts an annual production capacity of 2,400 tons and specializes in laser cutting, punching, bending, shearing, welding (aluminum and steel), pressing, drilling, and routing-all of this is handled by an expert team of 100 professionals.

The GWS Engineers & Fabricators service range includes the design and manufacture of all types of sheet metal products for the construction industry: perforated metal screens, metal door sets, electrical equipment/panels, and much more.

We are a team that prides itself on its knowledge of international user standards, technological work changes, and industrial systems, and we are dedicated to providing the best and most economical sheet metal solutions to our valued customers.

This is how we're paving the way for a new age in facade architecture.



Jawahar H. Hemrajani
Chairman & Managing
Director

A TEAM LED BY A GREAT MIND

“Excellence is never an accident. It is always the result of high intention, sincere effort, and intelligent execution.

- Aristotle

Shri Jawahar Hemrajani, chairman of five companies, started his journey to business brilliance with humble beginnings. As the founder and chairman of Glass Wall Systems India Pvt. Ltd he has seen the company rise to the position of a leader in India's glass facade business. Today, under his leadership, we have over 150 completed projects to our name and a pan-India team of over 2,500 people. With Mr. Hemrajani at the helm of our team, we stand tall as leaders in the Indian perforated sheet metal market.

Now, Mr. Hemrajani is looking ahead... to bring his rich experience to customers the world over.

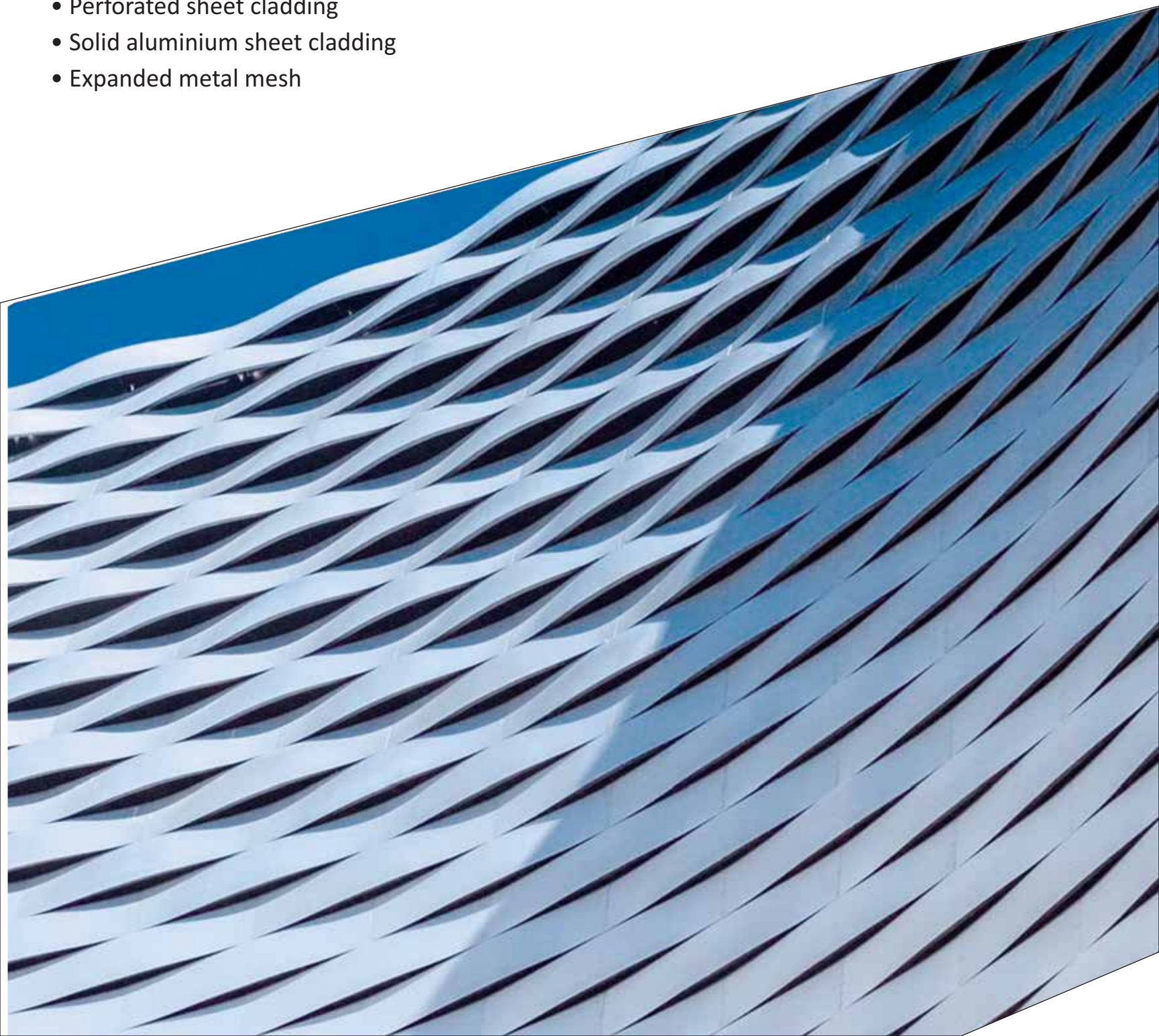
CREATING THE **NEXT BIG THINGS** IN SHEET METAL FACADE ARCHITECTURE

Beauty without expression is boring
- Ralph Waldo Emerson

At GWS Engineers & Fabricators Pvt. Ltd., beauty glows through the expression of modernism. Every product is envisioned with the future in mind; every effort is made with development as the goal; every project is an achievement in art.

Come. Discover our project portfolio.

- Perforated sheet cladding
- Solid aluminium sheet cladding
- Expanded metal mesh



PERFORATED METAL SCREENS

State-of-the-art automated machinery creates intricate patterns of apertures that can be produced even in small batches

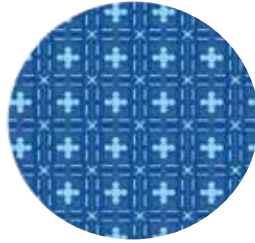
Innovative creations in a variety of shapes



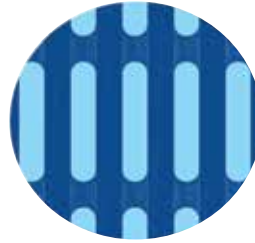
GWS 01



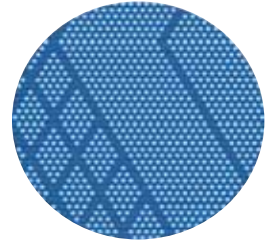
GWS 02



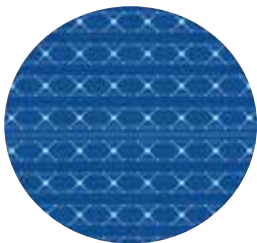
GWS 03



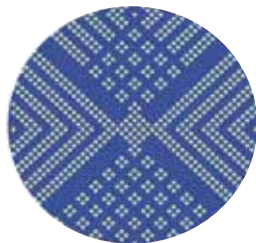
GWS 04



GWS 05



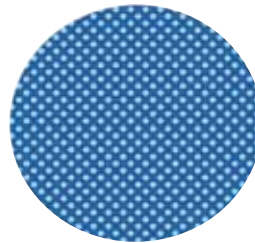
GWS 06



GWS 07



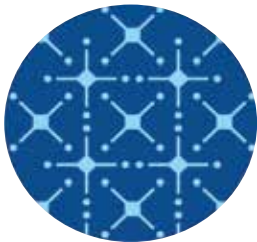
GWS 08



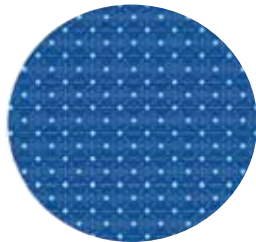
GWS 09



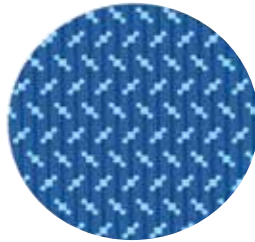
GWS 10



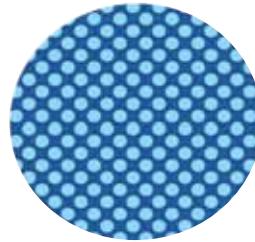
GWS 11



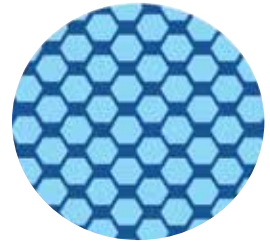
GWS 12



GWS 13



GWS 14



GWS 15

Shape Images

A range of material options for unmatched versatility



Galvanised
Steel



Stainless
Steel



Brass



Aluminium



Cold-Rolled
Steel



Copper

BENEFITS THAT MATTER

Why are perforated metal screens the better facade choice?

Multiple Studies have found that perforated metal is the future of facade architecture



Protection from harmful
effects of noise



45% HVAC energy
savings



Reduced sound levels



29% HVAC + lighting
energy savings



Solar irradiation
reduction up to 77.9%



Weight reduction



Transparency



Anti-skid properties



Zero maintenance



WORK THAT **INSPIRES**

At GWS Engineers & Fabricators, we provide full support and guidance to bring CAD, 2D, and 3D concepts to life. Right from the conception and execution of our very first perforated metal cladding project in 2006, we have held the unwavering belief that no sheet metal facade architecture dream is unachievable for us. It is this faith in our capabilities that drives us.

CASE STUDY 1

WORLD ONE : A SOARING ACHIEVEMENT IN PERFORATED METAL FACADES

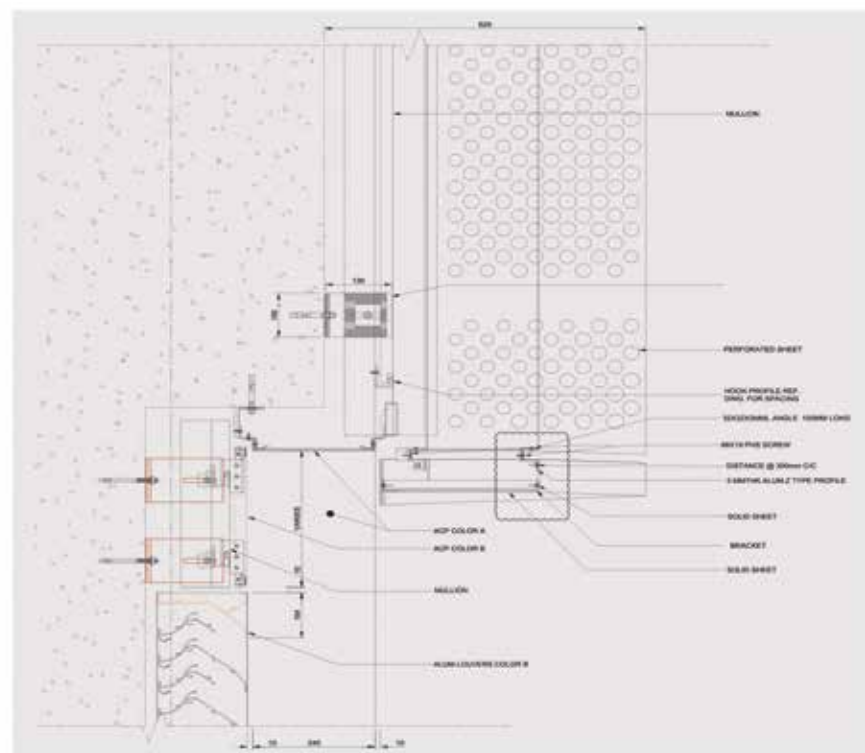
The towering piece de resistance of Mumbai's skyline

Developer: Lodha Group

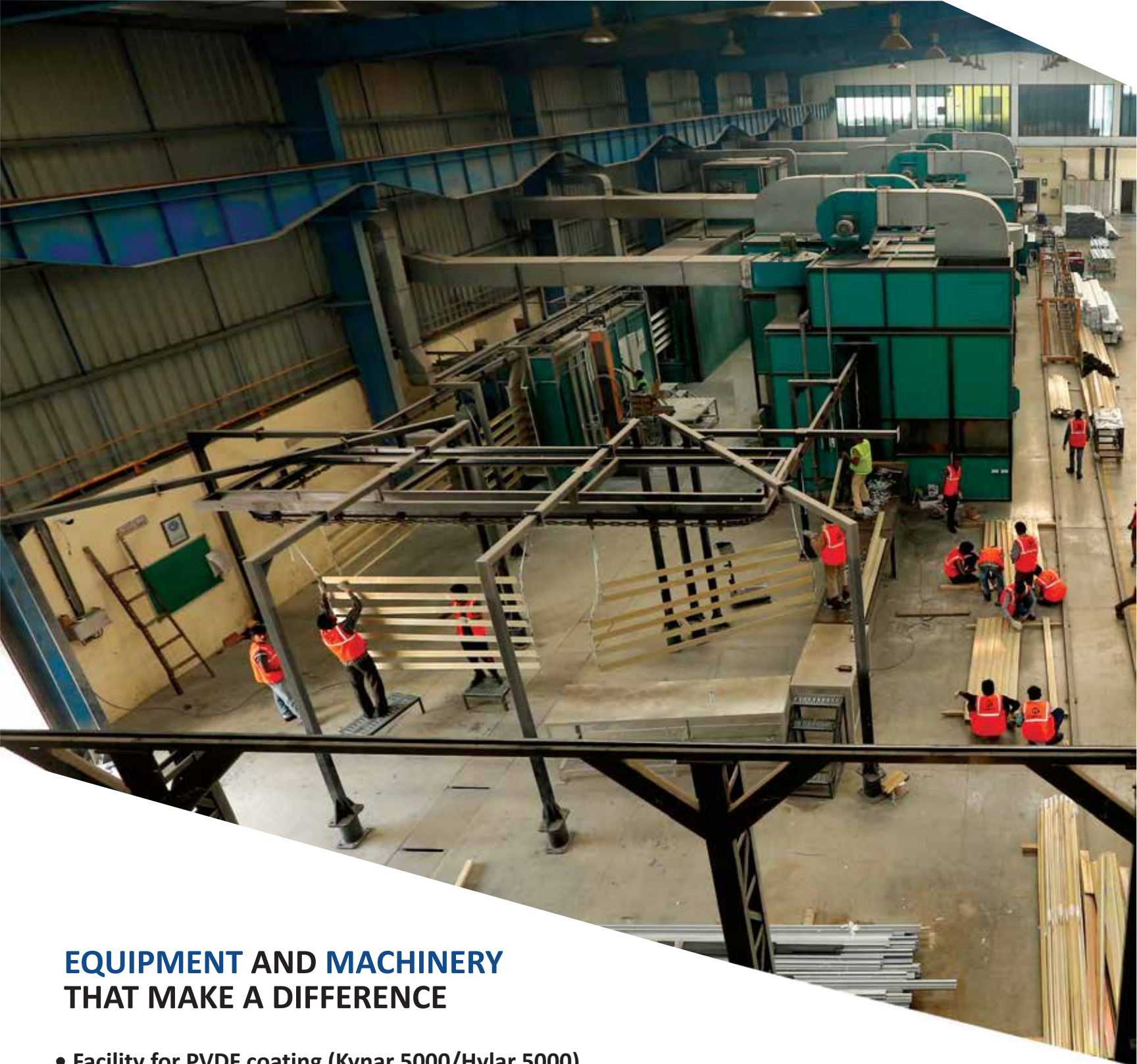
Architect: pei cobb Freed and partners, USA

Key Features

- Varying die-hole sizes in a single panel, with 40% perforation
- Dimensions of one panel: 4.5 m x 1.2 m
- Bottom cap inclined
- Total area of perforated sheet cladding: 36,000 sq.ft.







EQUIPMENT AND MACHINERY THAT MAKE A DIFFERENCE

- Facility for PVDF coating (Kynar 5000/Hylar 5000)
- Approved facility for powder Coating super Durable Powders
- Liquid painting facility for FEVE, polyurethane (P.U), and Epoxy Paints
- Application standards on a par with AAMA2603, 2604, abd 2605 norms
- Facility to pre-treat and coat aluminum extrusion/panels up to 7 metres in length
- 10 tank immersion hot chromating for aluminum
- 14 tank immersion hot phosphating for mild steel
- Fully equipped laboratory for testing, pre-treatment, PVDF, and powder coating
- Spectrometer to monitor PVDF and powder coating batches
- Colour booth for matching PVDF and powder panels
- Salt spray test
- PVDF blending facility for making unique shades



A PEERLESS IN-HOUSE COATING FACILITY

The GWS Engineers & Fabricators in - house coating facility is built and equipped to achieve excellence. Four conveyerised powder coating and PVDF coating lines, with a total coating capacity of 70,000 sq.ft. per day, spend precious hours adding finishing touches to numerous products. This Coating is on a par with international coating quality standards. In fact, we are the authorised applicators in India for European experts. We utilise Jotun Powder for super durable powder coating, such as PE-F, PE-SDF and Durosol, and AkzonNobel for Interpon D-1000/ 2000 / 3000. To facilitate unmatched PVDF coating, at our facility, we have tied up with PPG (USA), AkzonNobel (France), Beckers (Sweden), and DNT (Singapore).

Our Warranty powder coating ranges from 10 years to 35 years and our PVDF coating is backed by a 20-year product warranty



CASE STUDY 2

THREE SIXTY WEST: TWIN TESTAMENTS TO THE POWER OF PERFORATED METAL

Perfection in the execution of perforated metal facades

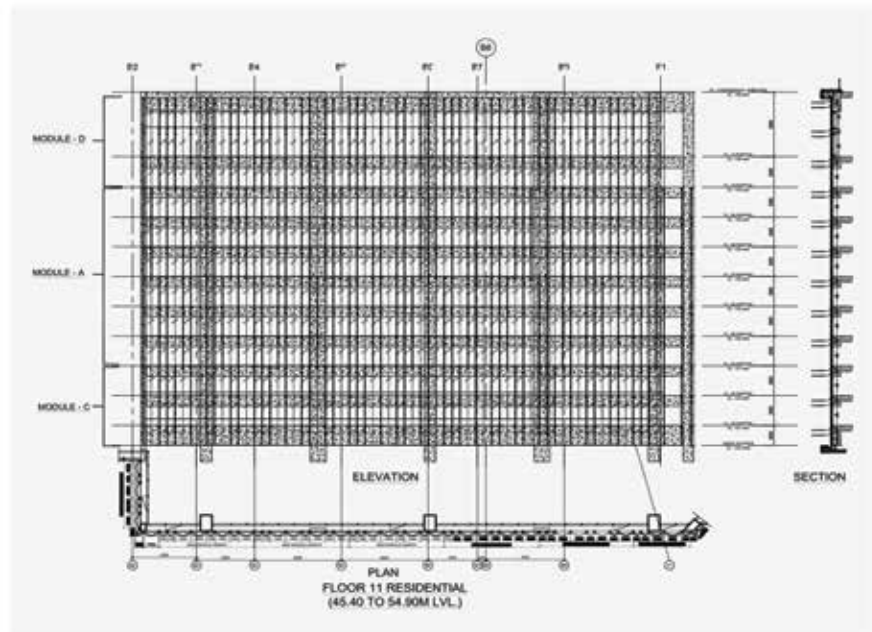
Developer: Oberoi Realty

Architect: KPF, NEW York

Key Features

- Three types of modules (hole diameter = 50 mm),
- Sheet area: 46.5 sq.ft.
- Perforation area: 40,000 sq.ft.
- Perforation percentage: 32%

An inside look at the brilliance of joinery



Perforated Metal Screens : Beyond Facades

A world of alternative applications



Railings



Sunshades



Seating



SOLID ALUMINIUM SHEET CLADDING

Aluminium panels that are the green way to create architectural facades that are exquisite, lightweight, and built to last.

GODREJ PLATIUM : STATE - OF- THE-ART ALUMINIUM SHEET CADDING

A residential complex of the future

Developer : Godrej Properties

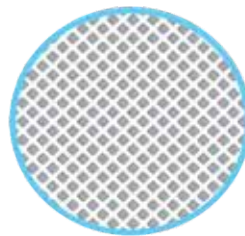
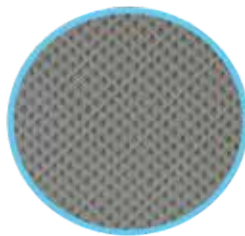
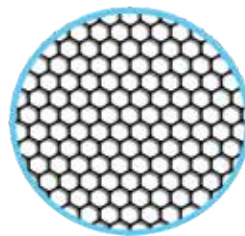
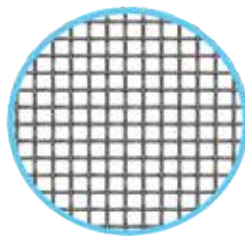
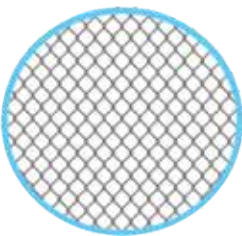
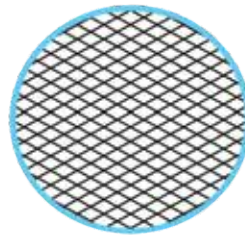
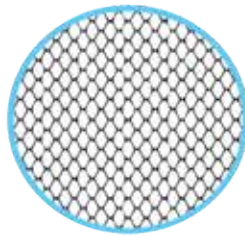
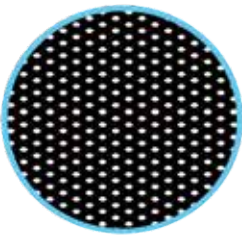
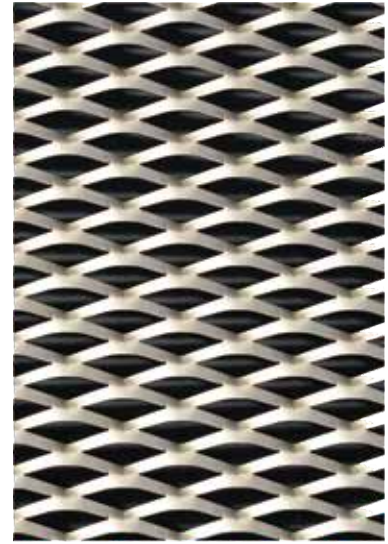
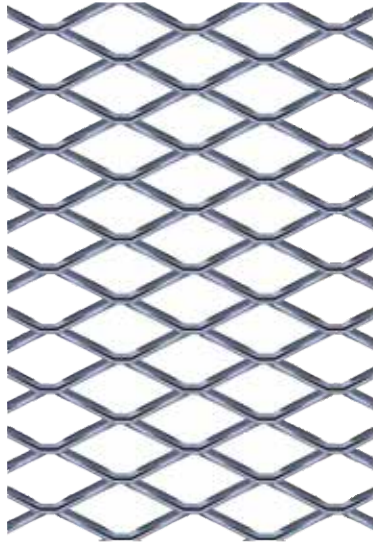
Architect : T. khareghat & Associates

Key Features

- 3mm-thick aluminium bend sheets
- PVDF coating
- Aluminium runners attached to the civil structure

EXPANDED METAL MESH

A form of sheet metal that's cut and stretched to form patterns for facades, interiors and much more



TALK TO US

About your sheet metal facade architecture goals

15

years of engineering
experience

14

locations

500+

engineers and other
professionals

150+

completed projects

certifications and Membership



Contact Address :

A-512, TTC Industrial Area, Mahape MIDC off
Thane-Belapur Road, Navi Mumbai-400 710,
Maharashtra, India.

Email ID :
info@gwsengineers.com

Contact Number :
(+91) 98333 09045 / 97691 21009

Website :
www.gwsengineers.com